



ATENEA FTIMV-16 | FTIMV-25

The "Atenea" industrial mixer is used in order to achieve perfect homogenization of solid with solid (in any proportion) and solid with liquid (10% maximum) products in powder or granulated form.

It has a V-shaped body with two loading inlets and one outlet, with a rotating valve to facilitate the unloading of the mixture.

Due to the V-shape axial currents are produced when the body is turned through 360 ° and these currents separate and unite the product to be mixed. This, along with the radial mixing action, produces a homogeneous result (in the proportion of 1 part in 10.000).

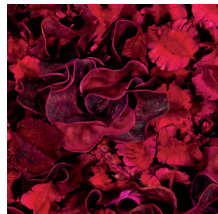
It is possible to add an intensifying bar within the interior which breaks down lumps and reduces the mixing time. Using this intensifying bar it is possible to add liquids in spray form.

The surface finish is mirror-polished with various grades of polish as required.

The mixing time varies depending on the complexity of the mixture.

OPTIONAL

- > Perfectly aligned intensifying bar with friction seals to repel dust, operated by electric motor.
- > Covered safety protection barriers, or via detecting cells.
- > Finishes and qualities.



BENEFITES

- > It allows for smooth mixing without deformation to the particles or, when necessary, energetic mixing in order to break up lumps with the intensifying bar.
- > Complete unloading through gravity. The receptacles are designed to prevent product sediment accumulating in their interior, which is free of angles, corners or grooves.
- > A minimum of environmental contamination during mixing time, as it has inlets and outlets with hermetically sealing caps. V-shaped receptacle.
- > Compact design.
- > Low energy consumption when compared to other mixing systems.
- > Easy to operate.
- > Easy to clean, as its interior is highly polished and is free of angles.
- > Highly cost-effective due to its mixing quality and low maintenance.
- > Touch screen and low maintenance.
- > Very low installation and assembly costs, as the mixers leave our workshop ready for use.

INCLUDES

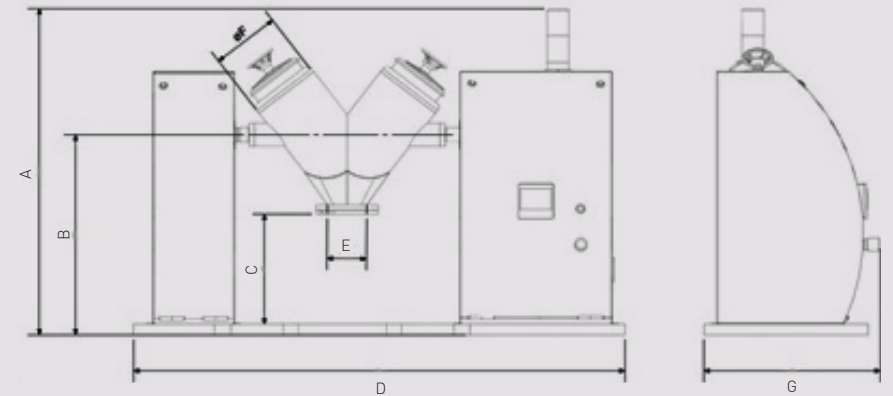
- > The V-shaped receptacle is mirror-polished, both inside and outside.
- > Two easy-opening hermetic loading inlets with EPDM silicon seals.
- > Two machined and perfectly aligned supports on which to fix the rotational mountings holding the "V".
- > Gear motor drive.
- > Automatic stop positioner via detecting cells to stop loading and unloading.
- > Electrical panel perfectly integrated within the support, to control the motors, emergency stop, reset button and an automatic logic control operating terminal with touch-screen which allows the performance of various mixing programs, work time monitoring, equipment revolution monitoring
- > Luminous signalling beacon for stopped and working.
- > User manual.
- > CE declaration of conformity.

ATEX UNDER REQUEST

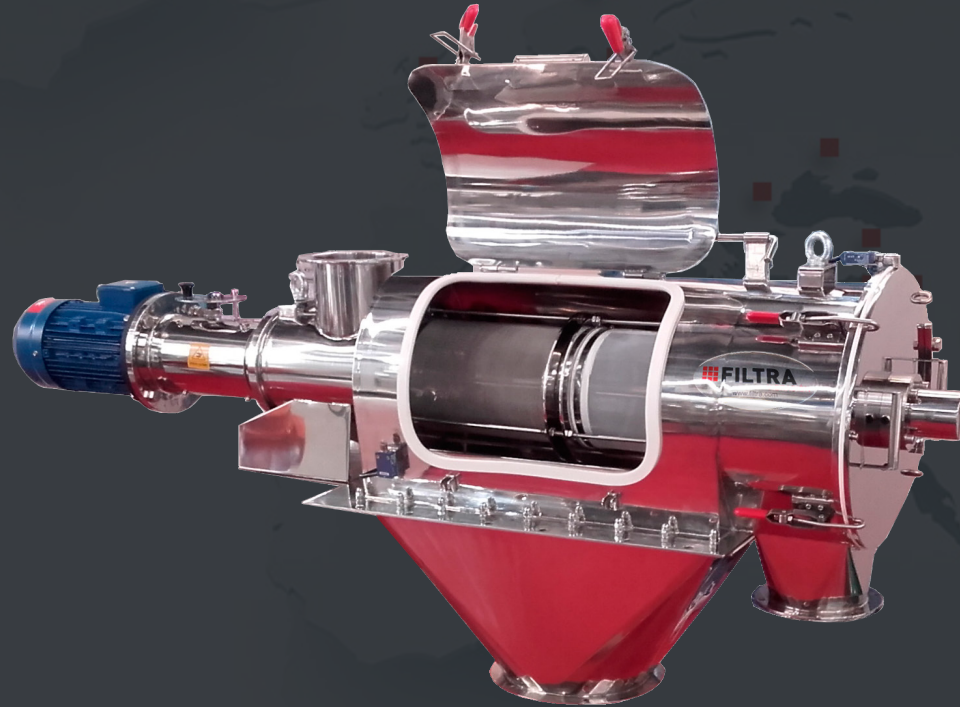


TECHNICAL FEATURES

Model	Time display (min.)	Voltage	Mixer Power (kW)	Intensifying bar Power (kW)	Useful Volum (l)
FTIMV-16	0-90	230 V 50 Hz	0,120	0,100	8
FTIMV-25	0-90		0,180	0,100	12,5



(mm)	FTIMV-16	FTIMV-25
A	935	935
B	610	610
C	330	300
D	1430	1550
E	ø100	ø120
F	ø205	ø230
G	465	465



SIEVING FOR LABORATORY AND INDUSTRIAL PROCESSES

FILTRA
VIBRACIÓN

Filtra Vibración S.L

C/ BRONZE, 1-3, P.I. LES GUIXERES
08915 BADALONA (BARCELONA)

filtra@filtra.com
filtra.com